



# **Building organizational capacity for evidence-informed decision making with an online skills assessment tool**

Claire Howarth, MPH

Emily Clark, MSc

Heather Husson, BA, MA(c)

Maureen Dobbins, RN, PhD

Public Health 2019

Ottawa, ON

May 2<sup>nd</sup>, 2019

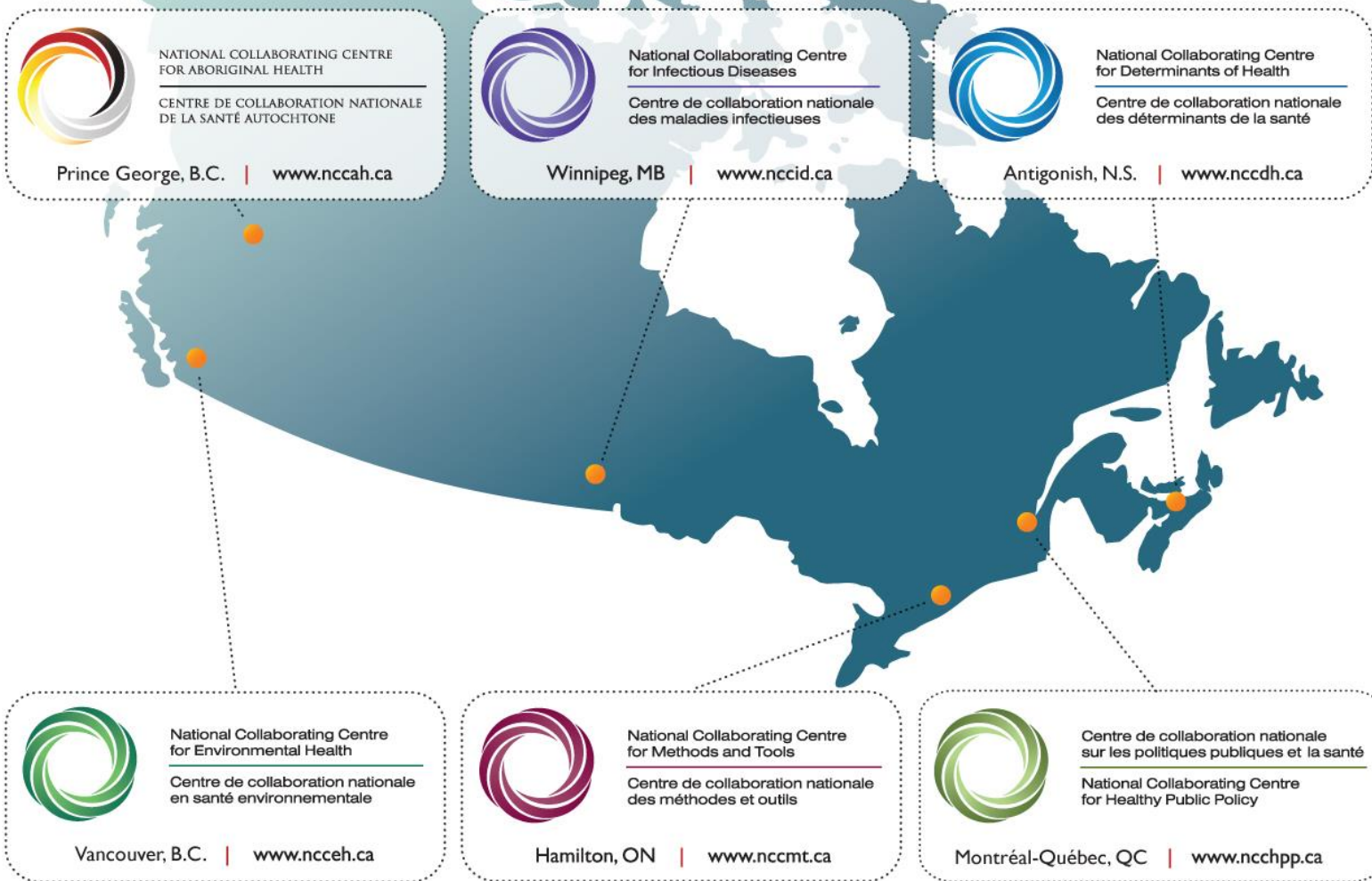
# Disclosure Statement

- I have no affiliation (financial or otherwise) with a pharmaceutical, medical device or communications organization.



National Collaborating Centres  
for Public Health

Centres de collaboration nationale  
en santé publique





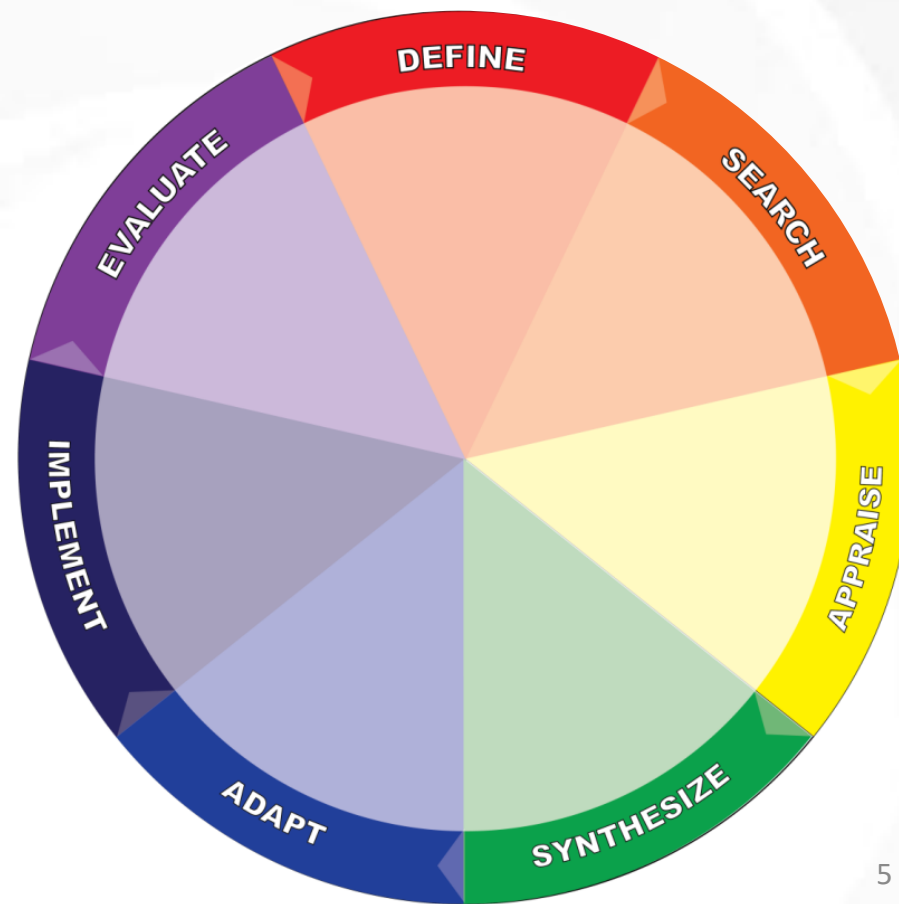
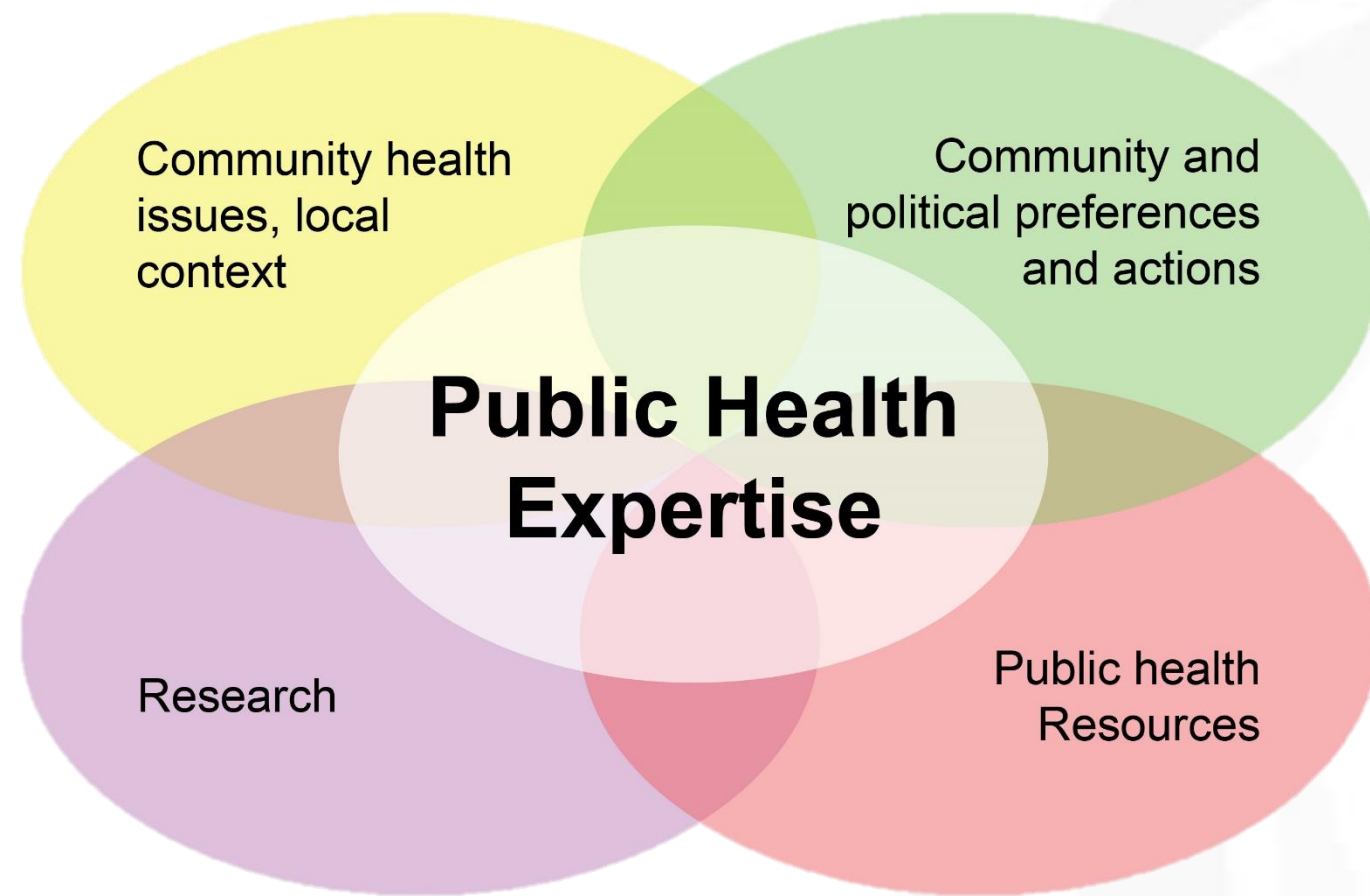
# What is Evidence-Informed Public Health?

The process of **distilling** and **disseminating** the best available evidence from research, context and experience, and using that evidence to **inform** and **improve** public health practice, programs and policy.





# Evidence-informed decision making (EIDM)







# The Online EIDM Skills Assessment

- Launched in 2017
- 20 multiple choice questions
- Receive a personalized report with suggested resources to build EIDM capacity
- Expansion to allow teams and / or groups within organizations to customize the assessment to their needs

## Online EIDM Skills Assessment

QUESTION 6 OF 20

6. What can a confidence interval tell you?

- ☐ a) heterogeneity
- ☐ b) sample size
- ☐ c) publication bias
- ☐ d) statistical significance
- ☐ e) I don't know

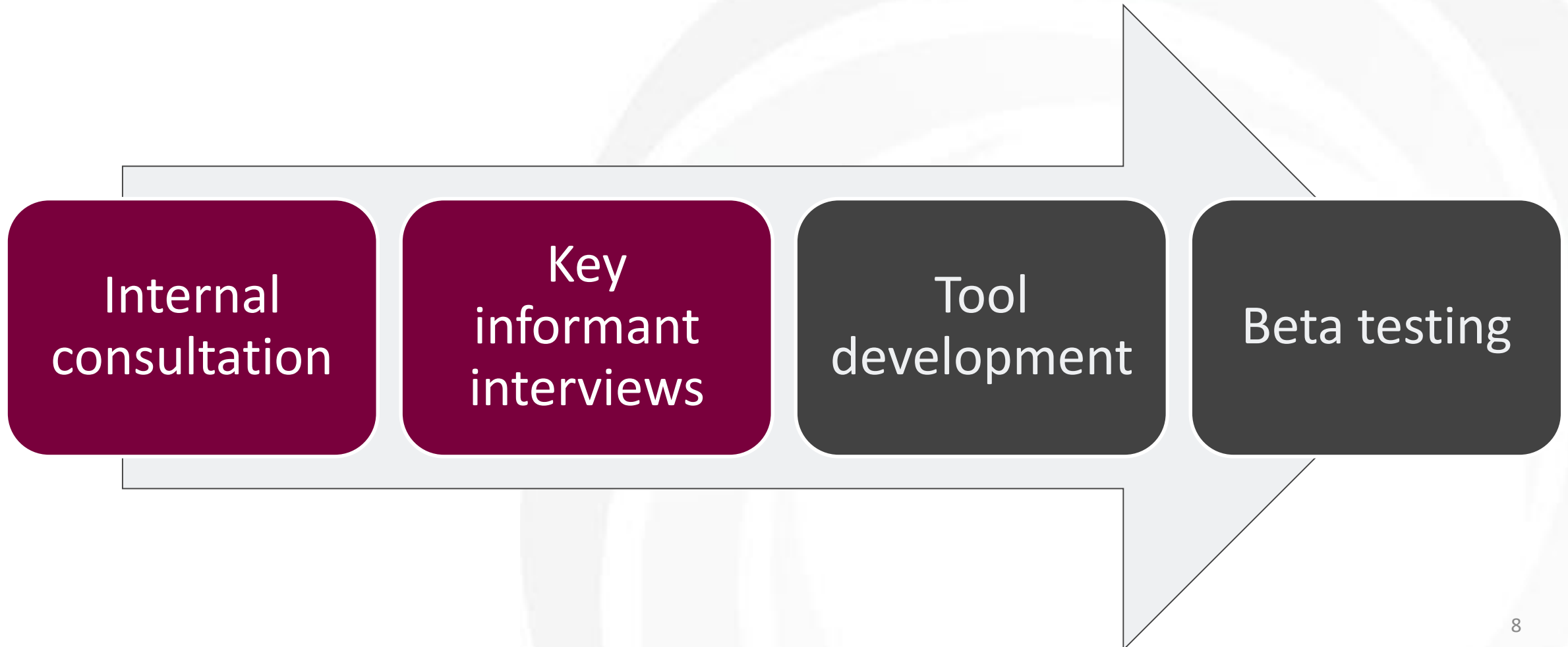


# Development Process





# Development Process







# Development Process





Thank you for completing the Online EIDM Skills Assessment. Your final score was X/20.

The preceding multiple choice questions were designed to assess your knowledge and skills in finding and using research evidence in decision making. The following report summarizes **free, online learning opportunities** available to improve your score.

We also recommend starting with the online learning module *Introduction to EIDM*, or the abbreviated module, *EIDM Essentials*, to establish a solid foundation on which to build your capacity.



#### 1. Defining the Research Question Using PICO

To learn more about defining a research question using PICO, we suggest you complete the *Searching for Research Evidence in Public Health* online learning module.



#### 2. Searching for Research Evidence

To learn more about efficiently and effectively searching for research evidence, we suggest you complete the *Searching for Research Evidence in Public Health* online learning module. You can also watch the *Step 2 – Searching* video part of the *Evidence-informed Public Health* video series.



#### 3. Critical Appraisal of Intervention Studies

To learn more about how to assess the quality of study methods, we suggest you complete the *Critical Appraisal of Intervention Studies* online learning module.



#### 4. Applying the Results of a Study

To learn more about the factors to consider when adapting research evidence to local contexts, we suggest you complete the *Assessing the Applicability and Transferability of Evidence* online learning module.



#### 5. Critical Appraisal of Systematic Reviews

To learn more about how to assess the quality of systematic reviews, we suggest you complete the *Critical Appraisal of Systematic Reviews* online learning module. For an introduction to different types of reviews, watch the *Types of Reviews What kind of review do we need?* video in the *Understanding Research Evidence* video series.



#### 6-10. Interpreting Research Results

To learn more about how to interpret statistics, we suggest you view the *Understanding a Confidence Interval*, *How to Calculate an Odds Ratio* and *Relative Risk: it's easy to calculate and interpret* videos in the *Understanding Research Evidence* video series.

# Sample Report



National Collaborating Centre  
for Methods and Tools

---

Centre de collaboration nationale  
des méthodes et outils

## Skills Assessment Group Assessment Report

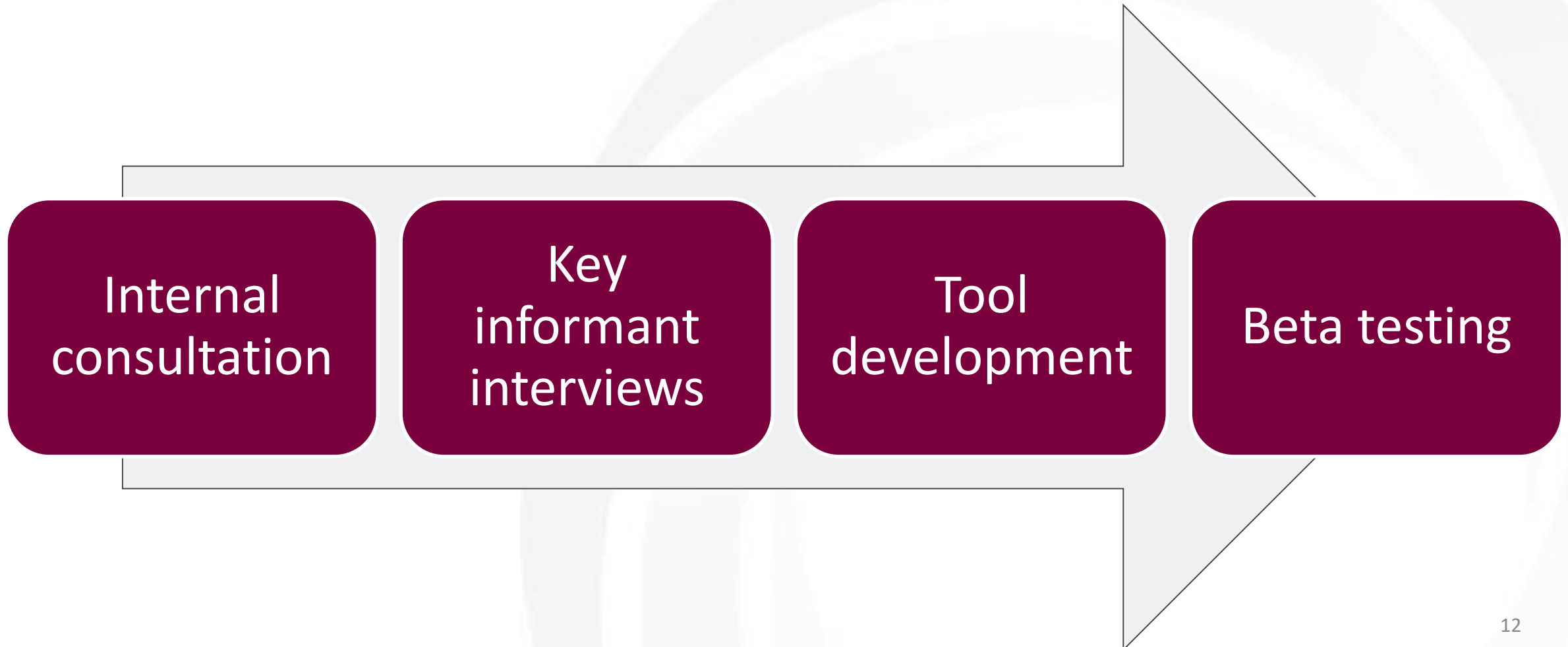
This report shows the performance of your group on the Evidence-Informed Decision Making Skills Assessment tool. The group average is included at the bottom of this report for each question, and the individual totals are included at the end of each row. A score of 1 indicates the question was answered correctly, and a 0 indicates it was answered incorrectly. A list of suggested resources to build EIDM capacity is provided below the report. These are prioritized in terms of your team's performance on questions relating to that skill as shown by the percentages in the score column. As result, the lowest scoring skill areas are listed first in this list. The percentage in the score column relates to the group average for the question.

Please contact us at [nccmt@mcmaster.ca](mailto:nccmt@mcmaster.ca) if you have any questions.

[illegible]



# Development Process





# Why use this tool?

- Developed by public health practitioners for public health practitioners
- Increasing emphasis on EIDM in public health practice
- The EIDM Skills Assessment can be used:
  - To identify EIDM capacity building and professional development needs of staff
  - To take action on identified professional development needs with suggested resources
  - During orientation for new staff to a public health organization



## Next Steps

- Formally launch the group functionality in 2019
- Explore developing sets of questions to assess different levels of EIDM competence





If you are interested in creating your own EIDM Skills Assessment for a group, please contact Claire Howarth.

Claire Howarth

[howartce@mcmaster.ca](mailto:howartce@mcmaster.ca)

(905) 525-9140 ext. 20460



# Questions?